

Hazardous Location Plugs, Receptacles and Interlocks

Delayed-Action Receptacles

Explosion-Proof: Div. 1, Class 1, Groups C and D

Circuit-breaking receptacles, plugs and connectors ensure complete circuit breaking under full rated loads. Equipment grounding is provided by means of a separate pole that makes contact before and breaks contact after the circuit poles. The delayed action operation sequence is as follows:

Insert plug, turn left, push in to make electrical contact then turn right to prevent accidental disconnection. To withdraw plug, the reverse procedure is followed, which provides time for extinction of the arc and cooling before the plug can be completely withdrawn.

Receptacles



Plug



RATINGS	POLES/WIRES	SURFACE MOUNT**			FLUSH MOUNT ▼	CABLE HOLE DIA.
		STRAIGHT	ANGLED			
Type EFS						
20 Amp	2P3W	4462	4464FC	4445	4466	9/16"
125VAC or 250VAC	3P4W	—	4465FC	4446	4467	19/32"
Type DA						
30 Amp+	2P3W	—	4233BC	—	4237BC	9/8"
250VAC or 480VAC	3P4W	RA4234BC	4234BC	—	4238BC	3/4"
60 Amp*	2P3W	—	4263BC	—	4267BC	1 1/4"
480VAC	3P4W	RA4264BC	4264BC	—	4268BC	1 1/4"

Notes:

* Also available for use at 30 Amp, 480VAC.

** Can be furnished with flap or screw cap covers. When so required, add suffix "FC" for flap or suffix "SC" for screw cap to above catalog number. Price on application.

▼ Furnished with plaster gauge plate. Requires wall depth of 4" minimum.

+ 30 Amp Iron-Bodied Plug Family for replacement use only. Not UL Listed. (60 Amp carries full listing.)

Hazardous Location Plugs, Receptacles and Interlocks

Delayed-Action Receptacles (EFS and DA)

Power & High Voltage — Russellstoll® Pin & Sleeve Power Connectors

Specifications

- Receptacle Housings: EFS — Cast copper-free aluminum; DA — Cast iron, corrosion-resisting baked enamel finish
- Plug Housings: 20 Amp — Steel, cadmium plated; 30 Amp — Cast iron; 60 Amp — Steel and aluminum, natural finish. Plugs are furnished with aluminum alloy cable clamp and Neoprene cable bushing
- Connectors: Cast aluminum, natural finish. Furnished with aluminum cable clamp and Neoprene cable bushing
- Flush Plates: Brass, polished chromium finish
- Outlets: Furnished with one outlet top or bottom as follows. 20 Amp — ¾"; 30 Amp — 1"; 60 Amp — 1½". Additional or larger outlets charged extra. Maximum conduit sizes, four ways as follows: 20 Amp — 1"; 30 Amp — 1½"; 60 Amp — 2". Single gang — top and bottom only; two gang — one per gang top and bottom and one on each side. Specify size and location
- Cable Bushing: Oil-resistant, Neoprene strain-relief cable bushing regularly furnished with hole size as listed. Other hole sizes available at no extra cost if specified on order. See page H-459.
- Surface Gang Units: EFS available and can be furnished in 2-gang units or in combination with other like devices
- Approvals: 20 and 60 Amp

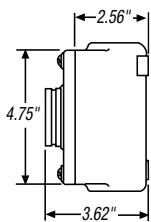
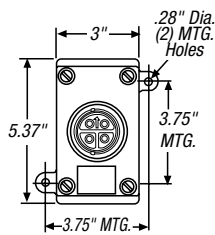
Dimensions



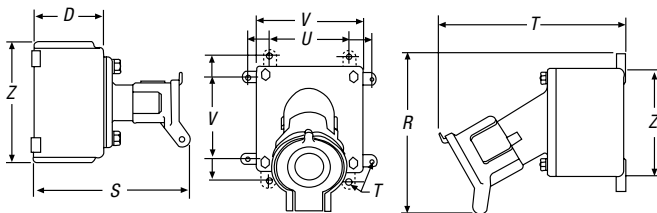
Surface-Mount Receptacles

Flush-Mount Receptacles

Type EFS (20 Amp) Straight

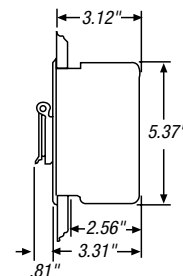
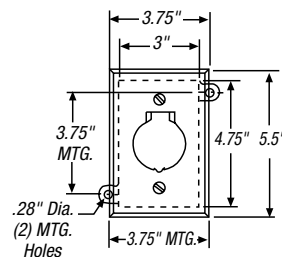


Type DA (30 and 60 Amp) Straight



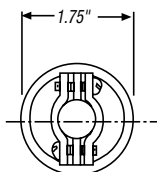
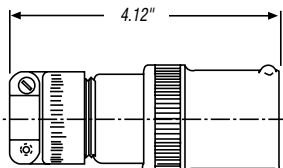
AMP		D	R	S	T	U	V	Y	Z
20	Angle	2.56"	—	6.12"	.28"	3.75"	3.75"	3"	5.37"
30	Straight	3.87"	—	8.62"	.34"	6.12"	5"	5.25"	6.75"
	Angle	3.06"	7.37"	8.37"	.28"	3.50"	5.50"	4.75"	4.75"
60	Straight	3.87"	—	9.25"	.34"	6.12"	5"	5.25"	6.75"
	Angle	3.87"	9"	9.25"	.34"	6.12"	5"	5.25"	6.75"

Type EFS

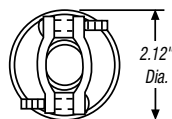
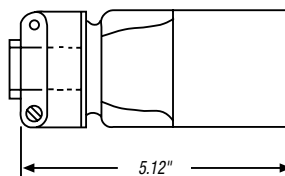


Plug

20 Amp Plug



30 Amp Plug



60 Amp Plug

